

# آستیک آغانک

Par Astique Agha

# کنزای ساقی کل مهره

Guêlir éy saki

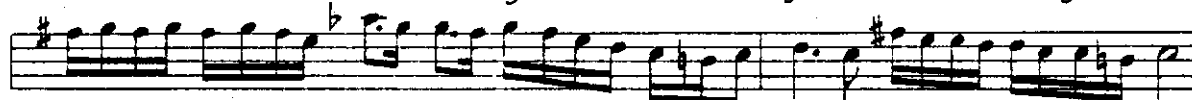
آه ای تیر گی آه  
ah guêlir éy sa kiy i gul tchéh ré bi rak



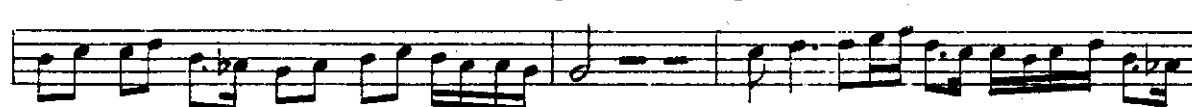
نوش ده ای کل "ساز" آه دی می غه  
nouch i dé lin guêl "M." ah gn mi di



ری نه ای با می فا را  
ri né i éy ya mi fa ra



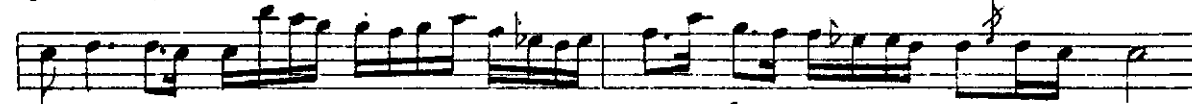
موش ده ای کل کل  
mouch i dé lin guêl guêl



کل ای سر ده وان  
guêl éy sér vi ré van

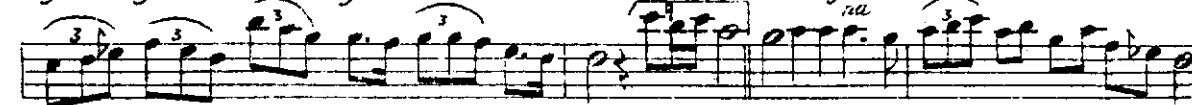


کل کل  
guêl guêl



بورولک میانی

ای غون دی جه نا جالی ناز ساز هن  
éy gon djé di hén "M." naxlidja nim




جان سا نور کا بان آه ماکشی فا  
djan sa na kour ban ah ka chi kéma nim



ای شه دۆ دان عا آه شی دیم  
ey ché hi dév ran a: a shi kin hév dím

The musical notation for the first line of the song 'Dünya' is shown on a single staff. It begins with a treble clef and a key signature of one sharp (F#). The melody consists of eighth and sixteenth notes, with some triplets indicated by a '3' over a bracket. The lyrics are written above the notes: 'ای شه دۆ دان عا آه شی دیم' and their phonetic transcription 'ey ché hi dév ran a: a shi kin hév dím'.

شکل ۱۰۰  
کُتبی "ساز" ران  
حی نه نو  
hay ne nu  
شش  
shush

[illegible]

٦      او نك      لام      كل ساز آه نا      ٦ ٤ ٢  
 ra      nin o      lam      guet - M. ah      na, le' ye'

The first line of musical notation is on a single staff. It begins with a treble clef and a key signature of one sharp (F#). The melody consists of eighth and sixteenth notes, with some rests. The lyrics are written above the staff, aligned with the notes. The word 'guet' is underlined, and there is a double bar line after it. The word 'M.' is written below the staff, and 'ah' is written above it. The final note is a half note with a sharp sign.

bach      la      ya      lim      chep kigut      rou      rou      yé      i      lé

The first line of musical notation is written on a single staff. It begins with a treble clef and a key signature of one sharp (F#). The melody consists of several measures, including some with beamed eighth notes and a final measure with a whole note. The lyrics are written above the staff, aligned with the notes.

وای . ساز . ک له شوی آد بن لی بو نا  
vay "M." ah cheuy lé him bul bu li na

لن ده يي موش خا يي ده لي كل  
lén de yi ha mouch yi de lî quel

The musical notation for the first line is written on a single staff. It begins with a treble clef and a key signature of one sharp (F#). The melody consists of several eighth and sixteenth notes, with some beamed groups. The lyrics are written above the staff, with each syllable aligned with its corresponding note or group of notes.

وان ر.ه وی یس ای کی کی  
van re vi ye gi gi  
guél guél

Jimmy Koo